

7-Day Info Pack

Iceland's Ring Road & Snaefellsnes Small Group Tour

As a tour operator with roots dating back to the 1960s, **BusTravel Iceland** is thrilled to have you join us on our tour exploring Iceland's Ring Road—the ultimate adventure in the land of fire and ice.

This information pamphlet is designed to introduce you to the incredible journey that lies ahead, help answer any questions you may have, provide essential facts about Iceland, and set the right expectations for your adventure.

We look forward to guiding you through some of the most breathtaking landscapes in the world, ensuring that your experience is both memorable and enriching.

Don't just visit Iceland — experience it to the fullest!



BusTravel Iceland



Table of Contents

- 
- 1 About The 7-Day Iceland Ring Road Tour**
 - 2 Itinerary**
 - Day 1
 - Day 2
 - Day 3
 - Day 4
 - Day 5
 - Day 6
 - Day 7
 - 9 About Pick-up and Drop-off**
 - 10 About Accommodation**
 - Room
 - Location
 - Amenity
 - 12 About Meals and Food**
 - Breakfast at Hotels
 - Your choice of lunch and dinner
 - Special meals and Dietary Restrictions
 - 14 Optional Add-on Activities on the Tour**
 - Katla Ice Cave adventure
 - Relaxing at Vok Baths
 - Whale Watching from Akureyri
 - 15 About Sightseeing During the Tour**
 - Diverse Natural Attractions
 - Cultural Sites
 - Seasonal Variations
 - Accessibility
 - 16 About BusTravel Iceland's Tour Guides**
 - 17 About Your Luggage**
 - 18 About BusTravel Iceland's Multi-day Tour Vehicle**
 - 19 Weather in Iceland**
 - 20 Seasons in Iceland**
 - 21 Daylight Change in Iceland**
 - 22 How To Dress When You Travel Around Iceland**
 - 23 How to Pack for Your 7-Day Adventure Around Iceland**
 - 24 Good to Know**
 - Iceland's Bathing Etiquette
 - Icelandic Quick Tips
 - 25 Iceland Basic Facts**
 - 26 BusTravel Iceland's Reviews and Passenger Feedback**
- 

About The 7-Day Complete Iceland Tour

Our meticulously crafted **7-day Iceland Ring Road tour** offers a condensed yet comprehensive journey, designed to immerse you in Iceland's most awe-inspiring sights and thrilling activities. In a week, you'll traverse the iconic **Golden Circle Route**, marvel at the majestic **South Coast** waterfalls, walk along black sand beaches, and gaze upon the serene beauty of glacier lagoons. Each day, you'll encounter a diverse array of landscapes, all showcasing the breathtaking natural wonders that Iceland is famous for.

As the tour progresses, we'll venture into the unique terrains of **East** and **North Iceland**. In the North, you'll explore the famed **Diamond Circle Route**, home to stunning waterfalls, active geothermal areas, and vast lava fields. This part of Iceland is known for its dramatic and contrasting landscapes, offering a sense of adventure around every corner.


Heading towards the capital region via **West Iceland**, the journey continues to surprise and delight. Prepare to be captivated by the enchanting Hraunfossar waterfall, where streams of water seemingly flow from lava fields, and experience the raw power of Deildartunguhver, Europe's largest hot spring.

One of the unique highlights of our 7-day Iceland **Ring Road tour** is the chance to encounter Iceland's charming **puffin birds** in Borgarfjörður Eystra during the **summer** months. This region hosts one of Iceland's largest puffin colonies, offering a truly magical wildlife experience. In the **winter**, your journey may be crowned by the elusive **Northern Lights**, a natural phenomenon that, if conditions are right, will illuminate the skies in a mesmerizing display of colors.

As Reykjavik comes into view, signaling the end of your Ring Road adventure, you'll soon set off for the fantastic **Snaefellsnes Peninsula**. There, you'll discover a unique black sand beach, marvel at the iconic Kirkjufell mountain and its waterfall, explore dramatic coastal landscapes, visit a charming black church, and even spot some seals.

From the vibrant capital to the remote wilderness, every moment on this tour is designed to be unforgettable. Along the way, you'll have the opportunity to enhance your journey with exhilarating activities including **whale watching**, exploring an **ice cave**, and soaking in a **geothermal hot spring**. Each activity is carefully selected to provide you with an authentic taste of Iceland's natural beauty and cultural heritage.

Our 7-day Iceland Ring Road & Snaefellsnes expedition is your gateway to the full Icelandic experience.

- Please be aware that due to the unpredictable weather and road conditions in Iceland, BusTravel Iceland may occasionally need to modify the itinerary or select alternative routes to ensure your safety and comfort. (Any stop marked  is weather-dependent and may be replaced in winter due to road or accessibility conditions.) Additionally, given the limited availability of accommodations in Iceland, adjustments to the itinerary may be necessary. Rest assured, our dedicated team of experienced travel planners is committed to maintaining the quality and enjoyment of your tour. We strive to enhance every aspect of your journey and ensure that your experience with us remains exceptional. ●



Itinerary

Day 1



Starting point

Your chosen pick-up location in Reykjavik

Estimated travel distance

290 kilometers / 180 miles

Accommodation

In South Iceland region

Highlights

- Thingvellir National Park
- Geysir Geothermal Area
- Gullfoss Waterfall
- Seljalandsfoss Waterfall
- Skogafoss Waterfall
- Reynisfjara Black Sand Beach

Your **7-Day Ring Road & Snaefellsnes Peninsula tour** starts with a seamless pick-up in Reykjavik.

The first day takes you on the famous **Golden Circle Route**, beginning with a visit to **Thingvellir National Park**, a UNESCO World Heritage site where the North American and Eurasian tectonic plates meet. This park is steeped in history and offers stunning landscapes, from the dramatic rift valley to Iceland's ancient parliamentary site.

Following this, we head to the **Geysir geothermal area**, where you can witness the Strokkur geyser's impressive eruptions, and then on to the majestic **Gullfoss waterfall**, one of Iceland's most powerful and breathtaking waterfalls. Iceland's second-largest glacier, **Langjokull**, has a deep connection with the Golden Circle as it feeds both Thingvellir and Gullfoss, shaping the landscapes that define these iconic destinations and highlighting the powerful natural forces that sculpt Iceland's breathtaking scenery.

After lunch, the adventure continues along the **South Coast** with stops at two of Iceland's most stunning waterfalls. First, we visit **Seljalandsfoss**, a unique waterfall that allows you to walk behind its cascading waters for a truly immersive experience. Then, we make our way to **Skogafoss**, celebrated for its towering height and powerful flow. Both waterfalls provide incredible photo opportunities and a chance to feel the refreshing mist on your face as you stand in awe of these natural wonders.

Our final stop for the day is the famous **Reynisfjara black sand beach**, known for its striking basalt columns and dramatic sea stacks. This otherworldly landscape is not only visually stunning but also rich in Icelandic folklore, making it a captivating end to the day's explorations.

By the end of the day, we'll drive to your comfortable hotel in the South Coast region, where, in winter, you may have the opportunity to witness the stunning **Northern Lights** if conditions are just right.



Day 2



Starting point

in South Iceland region

Estimated travel distance

300 kilometers / 186 miles

Accommodation

In the Hofn area

Highlights

- Vik i Myrdal
- *Katla Ice Cave
- Fjadrargljufur Canyon
- Jokulsarlon Glacier Lagoon
- Fellsfjara-Diamond Beach

After enjoying a delicious breakfast at your hotel, we'll begin with a visit to the charming coastal village of **Vik i Myrdal**. Renowned for its striking black sand beaches and dramatic rock formations, Vik offers stunning views of the **Reynisdrangar sea stacks** and the iconic **Reynisfjara Beach**. This picturesque village is the perfect place to immerse yourself in the raw beauty of Iceland's southern coast before continuing on our journey.

The highlight of the day is a visit to the **Katla Ice Cave**, hidden beneath the Myrdalsjokull glacier. As you venture into the cave, you'll be mesmerized by the vibrant blue hues and intricate frozen formations that make this natural wonder truly unforgettable. This **optional add-on activity**, available for an additional fee, offers a once-in-a-lifetime experience. If you prefer, you can also spend this time leisurely exploring the tranquil beauty of **Vik** and its surroundings at your own pace.

After the ice cave adventure or your exploration of Vik, we'll pause for a delightful lunch in the village before heading to our next destination: the breathtaking **Fjadrargljufur Canyon**. Strolling along the canyon's rim, you'll be captivated by the sheer grandeur and beauty of this remarkable geological formation.

Continuing your eastward expedition, you'll reach **Jokulsarlon**, a **glacier lagoon** adorned with colossal icebergs. Here, you can choose to take a boat tour or simply bask in the mesmerizing spectacle of icebergs floating in crystal-clear waters. Nearby, **Diamond Beach** awaits, where ice fragments from the lagoon wash up on the black sands, creating a magical and unforgettable scene.

As the late afternoon approaches, we'll make our way to your hotel in the **Hofn** area.



Day 3



Starting point

In the Hofn area

Estimated travel distance

400 kilometers / 249 miles

Accommodation

In the Egilsstadir area

Highlights

- Djupivogur
- Egilsstadir
- Borgarfjordur Eystri - Summer
- Vestrahorn - Winter
- *Vok Baths

After enjoying a hearty breakfast at your hotel, we set out for **Djupivogur**, a picturesque fishing village known for its serene harbor and stunning mountain views. As you stroll through this coastal gem, take a moment to absorb the tranquility and natural beauty that define this enchanting region.

The journey then continues to **Egilsstadir**, the largest town in East Iceland, where you'll have the chance to savor a delicious lunch and relax before embarking on the next leg of your adventure. Egilsstadir serves as a perfect midpoint to catch your breath and recharge for the experiences ahead.

Between **mid-April** and **mid-August**, we'll take you to **Borgarfjordur Eystri**, a hidden gem renowned for its rugged beauty and thriving **puffin colonies**, offering the chance to observe these charming seabirds in their natural habitat. During the **winter months**, weather permitting, we'll visit the **Mt. Vestrahorn** area to explore its striking landscapes.

The day's exploration culminates with an optional visit to **Vok Baths**, a geothermal spa located on the shores of **Lake Urri-davatn**. Here, you soak in warm, soothing waters while taking in panoramic views of the surrounding mountains—a perfect way to unwind and rejuvenate.

As the day comes to a close, we'll drive to your hotel in the **Egilsstadir** area.



Day 4



Starting point

In the Egilsstaðir area

Estimated travel distance

320 kilometers / 200 miles

Accommodation

In Akureyri

Highlights

- Studlagil Canyon
- Dettifoss Waterfall
- Namaskard Geothermal Area
- Dimmuborgir Lava Formations
- Skutustadagigar
- Godafoss Waterfall
- Akureyri

The day begins with a visit to **Studlagil Canyon** after a delectable breakfast.

Known for its striking basalt columns and the vibrant blue hue of the glacial river flowing through, Studlagil Canyon is a hidden gem that serves as a paradise for photographers and nature enthusiasts. The canyon's unique formations make it an unforgettable stop on our journey to **North Iceland**.

From there, the tour continues to **Dettifoss**, Europe's most powerful waterfall. The sheer force and thunderous roar of the water plunging into the canyon below are awe-inspiring, offering a profound sense of nature's power and grandeur.

Next on our itinerary is the **Namaskard geothermal area**, where the landscape transforms into an otherworldly scene of steaming vents and bubbling mud pots. The vivid mineral deposits here provide a colorful contrast to Iceland's typical icy vistas. Following this, we explore **Dimmuborgir**, a mysterious **lava field** dotted with eerie rock formations and towering lava pillars.

Our journey then leads us to **Skutustadagigar**, a series of pseudocraters formed by past volcanic activity. Walking along the rims of these craters offers panoramic views and a unique insight into the volcanic forces that have shaped this region.

One of the day's highlights is a visit to **Godafoss**, the 'Waterfall of the Gods.' Renowned for both its breathtaking beauty and its historical significance in Icelandic lore.

As the day winds down, we make our way to **Akureyri**, where you can relax and unwind at your hotel.



Day 5



Starting point

In Akureyri

Estimated travel distance

290 kilometers / 180 miles

Accommodation

In the Laugarbakki area

Highlights

- Akureyri
- *Whalewatching from Akureyri
- Vidimyri Turf Church
- Hvitserkur Rock Formation ☞
- Kolugjofur Canyon
- Laugarbakki

Start your day in **Akureyri** with a delicious breakfast before taking a leisurely stroll to the harbor. Here, you can embark on an exhilarating **optional Whale Watching Tour**. This experience allows you to witness majestic whales breaching the ocean's surface, creating memories that will last a lifetime.

Akureyri, with its charming atmosphere and scenic surroundings, provides the perfect end to a day filled with exploration.

After your sea adventure—or a nice morning exploring **Akureyri**—enjoy a leisurely **lunch** in the city.

Then, set off to **Vidimyri Turf Church**—built in 1834 and one of Iceland's last remaining turf churches.

Dating back to the early days of Christianity, it's now preserved by the Skagafjörður Heritage Museum and features traditional seating and historic artifacts. You'll have time to explore the surroundings.

Your journey continues to **Hvitserkur**, a striking **rock formation** that juts out from the sea. This distinctive monolith is shrouded in myths and is a perfect spot for photography. ☞

The day's exploration then leads you to **Kolugjofur Canyon**, named after the giantess Kola from local folklore. The canyon, with its breathtaking waterfalls, offers serene beauty and a moment to relish the peaceful Icelandic landscape.

Finally, as evening sets in, travel to your hotel in **Laugarbakki**, a quiet retreat is an ideal place to relax.



Day 6



Starting point

In Akureyri

Estimated travel distance

290 kilometers / 180 miles

Drop-off

In Reykjavik

Highlights

- Brabrok Volcanic Crater
- Hraunfossar Waterfalls
- Barnafoss Waterfall
- Sturlureykir Horse Farm
- Deildartunguhver Hot Spring

As your Icelandic **Ring Road adventure** draws to a close, begin your 6th day with a delightful breakfast before embarking on the last leg of your journey.

Your first stop is **Grabrok**, a **volcanic crater** known for its breathtaking vistas. Enjoy a brief hike to the rim to immerse yourself in panoramic views of the surrounding landscape.

Continue to the serene **Glanni Waterfall** in the enchanting **Husafell region**, where the tranquil cascade and peaceful atmosphere offer a moment of relaxation.

Next, marvel at **Hraunfossar**, a series of **waterfalls** flowing through lava fields, showcasing a stunning contrast between the azure waters and dark volcanic rocks. Then, you will visit **Barnafoss waterfall**, where cerulean blue waters cascade into the canyon, creating a stunning visual spectacle.

Your journey then leads you to **Sturlureykir**, a traditional Icelandic horse farm, where you can meet the charming Icelandic horses and learn about their significance in Icelandic culture.

Afterward, visit **Deildartunguhver**, Europe's most powerful **hot spring**, and experience the raw power of geothermal energy firsthand.

Then, we are heading back to **Reykjavik**.



Day 7



Starting point

In Reykjavik

Estimated travel distance

450 kilometers / 280 miles

Drop-off

Your chosen point in Reykjavik

Highlights

- Berserkjahraun Lava fields
- Mt. Kirkjufell and Waterfall
- Snæfellsjokull National Park
- Djupalonssandur Beach
- Londrangar Basalt Cliffs
- Arnarstapi
- Budir Black Church
- Ytri Tunga Beach Seals

On the final day of your **7-day** Iceland adventure, join our intimate small-group tour from Reykjavik to the '**Iceland in Miniature**' **Snæfellsnes Peninsula** to experience the land of fire and ice's iconic sights, dramatic landscapes, and a wealth of discoveries.

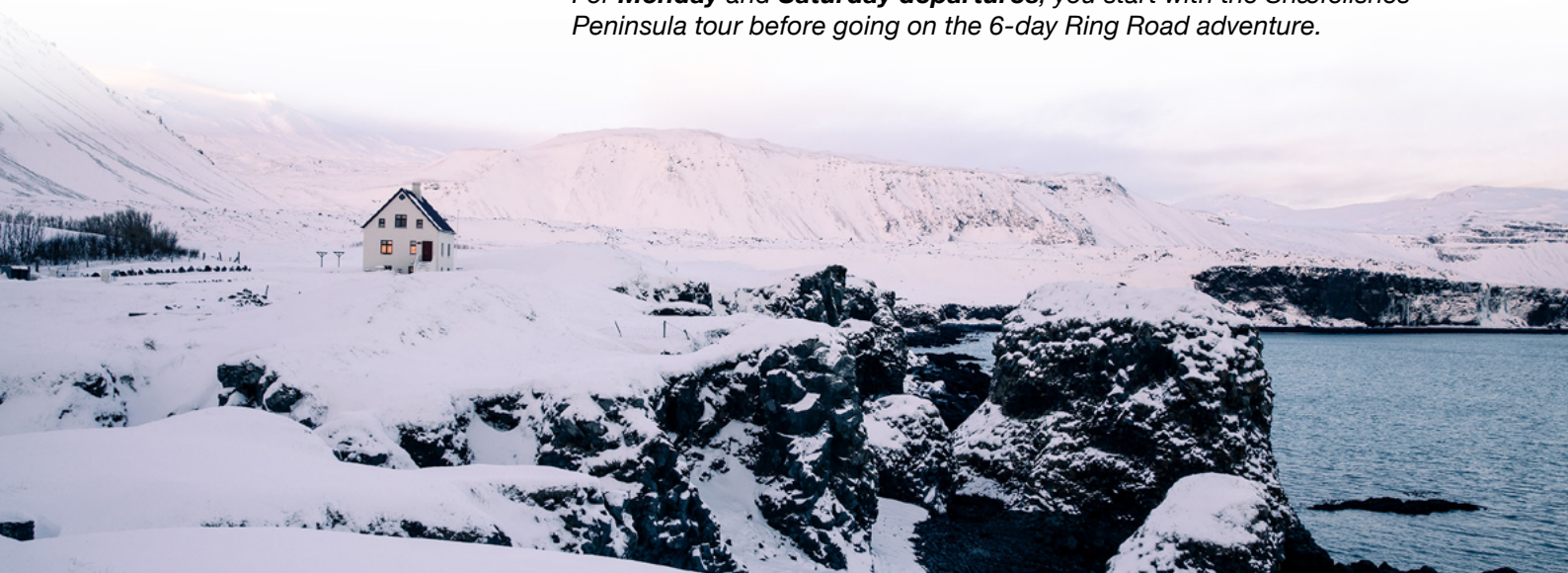
Begin your adventure at the ancient **Berserkjahraun lava fields**, where rugged volcanic terrain and weathered rock formations evoke a sense of primordial legend. Next, admire the iconic **Mt. Kirkjufell** and its cascading waterfalls—a picture-perfect scene that embodies the raw beauty of Iceland. Continue to the haunting black sands of **Djupalonssandur**, where smooth pebbles and scattered shipwreck remains whisper tales of the past. Marvel at the towering **Londrangar Basalt Cliffs**, dramatic remnants of volcanic activity that provide breathtaking ocean views and a sanctuary for nesting birds. Wander through the volcanic wonders of **Snæfellsjokull National Park**, a land of ancient glaciers and raw landscapes that once inspired Jules Verne's classic tale. Then, take in the sweeping coastal vistas from **Arnarstapi Cliff**, where rugged sea cliffs and unique rock formations invite quiet reflection. Capture the striking contrast of the solitary **Budir Black Church**, a minimalist wooden structure set against a vast lava field, before concluding your day at **Ytri Tunga Beach**, where playful seals bask on golden sands.

On day 7 of your epic adventure, immerse yourself in the rich history and awe-inspiring beauty of Iceland—a perfect finale to an unforgettable journey through this enchanting land.

Please note that the itinerary order varies by departure day.

For **Tuesday** and **Sunday departures**, you'll begin with our 6-day Ring Road tour and explore the Snæfellsnes Peninsula on Day 7.

For **Monday** and **Saturday departures**, you start with the Snæfellsnes Peninsula tour before going on the 6-day Ring Road adventure.



About Pick-up and Drop-off

BusTravel Iceland offers **pick-up** and **drop-off services** at **designated tour bus stops** throughout **downtown Reykjavik**. We endeavor to accommodate pick-ups from a diverse array of locations, aiming to make your travel experience as convenient as possible.

However, due to traffic regulations, we are unable to extend this service to every location, including Airbnb apartments, private residences, and Keflavik International Airport. We kindly ask that you consult the provided list of pick-up locations and identify the nearest designated stop using our map.

When booking your tour, you will have the opportunity to **select a pick-up location**. If you need to make arrangements after booking, please contact our **customer support** at least **48 hours** before your tour's departure to ensure smooth coordination.

Your booking voucher will indicate the time you should be present at the pick-up location. We appreciate your patience during the pick-up process, as it may take up to **30 minutes** for our driver-guide to reach your stop.

Please look for buses marked with the **BusTravel Iceland** logo and a pick-up sign on the windshield for easy identification.

Kindly note that there might be multiple BusTravel Iceland tour buses arriving at your pick-up stop. As the driver guide will have a list of passengers for the tour, please make sure that you have your voucher with you to confirm your booking and ensure you board the correct bus.

Should you have any questions or require further assistance, do not hesitate to reach out to our **customer support team**. We are here to help and ensure your tour experience is both enjoyable and hassle-free.



About Accommodation

Location

When we travel around Iceland, your comfort is our top priority.

Throughout the tour, we'll be staying at a variety of hotels. Some accommodations are located in larger or quaint **towns**, while others are in peaceful, remote **countryside** spots, each carefully selected as we understand that where you stay is just as important as the destinations you explore. This variety lets you fully experience Iceland's stunning beauty, whether you're near village life or surrounded by serene wilderness.

So we've meticulously chosen accommodations that not only align with our thoughtfully crafted itinerary but also enhance your overall experience. The areas we stay are **South Iceland, Hofn, Egistaddir, Akureyri, Laugarkakki**, and central **Reykjavik**.

Iceland's unique landscape means that hotels in rural areas can be limited. **Please note** that due to the varying availability of accommodations, the specific places we stay may differ between tour departures. However, rest assured that every location is chosen with your comfort and the seamless flow of the journey in mind.



Room

The accommodation on the 7-day Iceland Ring Road & Snaefellsnes tour offers a variety of **room options**, including **single, double/twin**, and **triple rooms**.

In Iceland, it's common for beds to feature separate mattresses and duvets, even for couples. Most hotels offer two separate beds that can be easily combined to form a larger bed, a standard practice throughout the country.

The **standard bed sizes** in Iceland are typically 90 cm (35 in) wide by 200 cm (79 in) long for a **single bed**, and when two single beds are joined, they create a **double bed** with a width of 180 cm (71 in). In some cases, a single room may offer a double bed that measures 140 cm (55 in) wide by 200 cm (79 in) long.



Icelandic hotel rooms often showcase a **minimalist Nordic design** with cozy furnishings, and are frequently located amidst **natural landscapes**, offering a serene and tranquil experience for a truly unique stay.



Amenity

Each room is equipped with a **private ensuite bathroom** and **free Wi-Fi**, often featuring conveniences such as **hairdryers** and **kettles** to enhance your comfort.

In the winter, many hotels provide a special **Northern Lights wake-up call service**, available upon request at the front desk—a truly magical experience that captures the essence of Icelandic winters.



About Meals and Food

Breakfast at Hotels

Breakfast is included at all hotels as part of the tour price.

Each morning, you'll enjoy a diverse **continental buffet** featuring fresh, local ingredients. Inspired by Nordic traditions, these breakfast buffets typically offer a variety of bread, crispbread, cereals, fruit juices, teas, coffee, milk, yogurt, Icelandic skyr - a local delicacy, butter, jams, sliced vegetables, fruit, boiled eggs, cheese, ham, and often salami.



Your choice of lunch and dinner

Lunch: usually, we make lunch stops to the suitable shops where we can purchase food and meals. These stops mainly are roadside shops, supermarkets, gas stations, etc. Common food options include sandwiches, hot dogs, soups, hamburgers, fish, chicken, snacks, and drinks.

Snacks and Drinks: At these stops, it's a good idea to pick up some snacks and drinks for the journey. Consider grabbing energy bars, Icelandic chocolate, wafers, and beverages like energy drinks, juice, smoothies, sodas, and water.

We strongly recommend bringing **your own water bottle**, as Iceland's tap water is not only drinkable but also tastes excellent. You can easily refill your bottle each day before we head out.

Dinner: We typically have dinner at the hotel where we stay or at a nearby restaurant. Some hotels offer an extensive evening menu, while country hotels may only provide a dish of the day. Icelandic cuisine often features fresh fish and wild mountain lamb, both of which are highly recommended.

In towns like **Akureyri**, **Hofn**, and **Egilsstaðir**, you'll find a wider selection of restaurants, but in more remote areas, dining options may be limited to the hotel. If you have any questions or concerns about meals, feel free to ask your guide, who will gladly provide information on the food options each day.



Special meals and Dietary Restrictions

Please **contact us** if you have any dietary restrictions, such as being vegetarian, vegan, gluten-free, lactose-free, diabetic, or if you have any allergies. If you develop any dietary needs after booking your tour, please inform our **Customer Support Team**. It's also crucial to remind your tour guide about your dietary restrictions so they can make the necessary accommodations.

In most cases, your dietary needs should be manageable, especially if you're not both vegan or lactose intolerant and gluten-free. However, if you require specific items like gluten-free bread, it's a good idea to bring them with you, as options on the road may be limited. If you need to pick up something special before heading into the countryside, you can always ask your guide to stop at a gas station or local supermarket before leaving Reykjavik. While these stores generally offer a good range of products, options may be more limited outside of **Reykjavik**, **Egilsstaðir**, or **Akureyri**.



Optional Add-on Activities on the Tour

During the booking process, you'll have the opportunity to choose from **three optional add-on activities** for an **additional fee**. These activities are thoughtfully spaced throughout our 7-day journey, allowing you to enjoy a variety of authentic Icelandic experiences every other day.

Katla Ice Cave adventure

On **Day 2**, explore the stunning **Katla Ice Cave** near **Vik**. Carved by the Katla volcano, this glacier cave features vivid blue ice and intricate formations shaped over centuries. With an expert guide, safely immerse yourself in this otherworldly landscape, offering a unique glimpse into Iceland's volcanic and glacial wonders.

The tour is accessible to most, though it involves navigating some uneven terrain. **Suitable fitness is advisable**. Rest assured, all necessary safety equipment will be provided to ensure your adventure is both enjoyable and secure.

Relaxing at Vok Baths

On **Day 3**, you would love the chance to bath in a geothermal pool that is surrounded by the beautiful Icelandic nature.

Bathing at **Vok Geothermal Spa** offers a serene escape into the heart of Iceland's natural beauty. Nestled on the shores of Lake Urriðavatn in **East Iceland**, the spa features warm, mineral-rich waters that invite you to unwind as you float in the lake's unique geothermal pools.

This is an **experience for everyone**. We highly recommend you bring your swimsuit.

Whale Watching from Akureyri

On **Day 5**, you will wake up in the capital of the North, **Akureyri**, a vibrant and artsy hub of **North Iceland**. You have the option to join a whale watching tour from Akureyri harbor.

The tour offers an unforgettable encounter with Iceland's majestic marine life. Set against the stunning backdrop of Eyjafjörður, the experience brings you close to magnificent whales as they glide through the deep blue waters.

Guided by experts, this tour is **suitable for everyone**, and all necessary gears are provided by the tour.



About Sightseeing During the Tour

Iceland's otherworldly **landscapes** and the diverse **attractions** along the **Ring Road** make sightseeing fantastic. It's dramatic, unique, and captivating. Here's a general overview of what you can expect.

Diverse Natural Attractions

Iceland is a **geologically young country**, characterized by an active volcanic landscape, which includes numerous volcanoes, lava fields, and hot springs. This **geothermal activity** shapes much of the **sightseeing experience**, from the famous Blue Lagoon to the explosive Geysir. The island is also home to an impressive array of waterfalls, such as Gullfoss, Dettifoss, and Skogafoss, each offering its own distinct beauty.

Cultural Sites

Beyond natural beauty, Iceland has a **rich cultural heritage**, from its sagas to traditional turf houses. Museums and historical sites are plentiful in cities like Reykjavik and Akureyri, and in smaller towns and villages around Iceland, providing insight into the country's **Viking history** and contemporary **Nordic culture**.

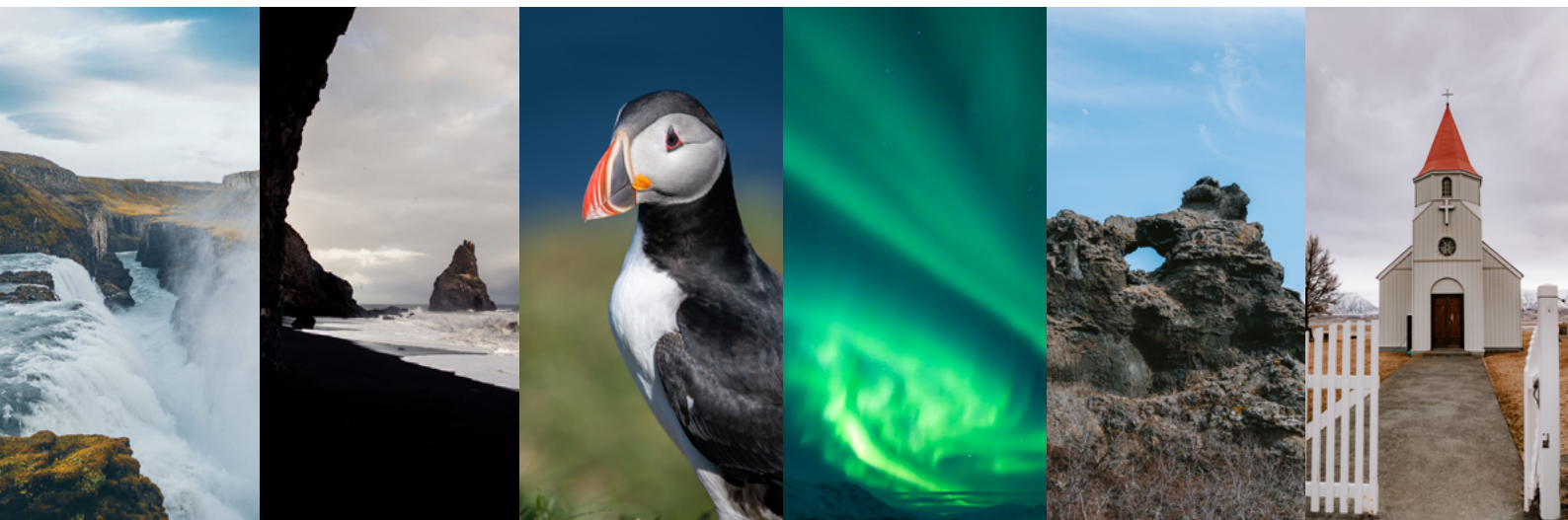
Seasonal Variations

Iceland's **high latitude** and **maritime influence** lead to a climate with cool summers and mild winters, though weather can be unpredictable. The summer months bring the **Midnight Sun**, providing nearly **24 hours of daylight**, which is ideal for hiking and exploring the vast wilderness. Winter, on the other hand, offers the magical **Northern Lights** but comes with **shorter days** and more challenging weather conditions, impacting accessibility to some areas.

Accessibility

Iceland's **Ring Road** (Route 1) is a 1,332-kilometer (828-mile) paved highway that circles the island, connecting **major attractions** like waterfalls, glaciers, and volcanic sites. Suitable for all vehicles, it's a key route for travelers.

However, weather conditions can affect accessibility, especially during winter when snow and ice may necessitate four-wheel drive vehicles. Services like gas stations and accommodations are regularly spaced, ensuring convenience for travelers as they explore the diverse landscapes.



About BusTravel Iceland's Tour Guides

We take great pride in our exceptional team of **experienced local guides**. Each guide is **professional, knowledgeable**, and brings a **sense of humor** and **accessibility** to their work. They are dedicated to transforming your tour into an unforgettable journey.

As our motto goes, '**we live it—you'll love it!**' Our **tour guides** at BusTravel Iceland are your gateway to discovering the rich tapestry of the land of fire and ice. They're not just passionate about Iceland—they're eager to share its **culture, history, geology, folklore**, and **intriguing tidbits**. As you embark on your sightseeing adventure, each guide will infuse the journey with their **unique personality**, enriching your experience with insights and stories that make every moment both meaningful and delightful.

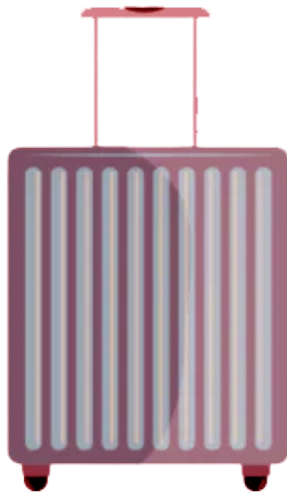


On **multi-day tours**, your guide plays a **key role** in cultivating a sense of unity and friendship within the group. As you journey together, the collective experiences foster a deeper connection among travelers. This enriched sense of community not only **elevates** the travel experience but also **deepens** your appreciation of Iceland's culture and landscapes, ensuring that each place visited and every story shared is both impactful and lasting.

About Your Luggage

We understand that **secure luggage storage** is a top priority when traveling abroad. On BusTravel Iceland's Ring Road tours, we provide **convenient options** for your suitcase storage.

For our Ring Road tour, each passenger is allowed one piece of luggage weighing **up to 20 kg**, which will be stored in the back trunk or trailer. Additionally, you may bring a **backpack** or **personal item** on the bus, which can be placed on the overhead shelf.



20 kg (44 lb)



personal item

If your luggage exceeds these limits, there are a couple of **alternatives** available:

Hotel Storage: You can ask the receptionist at your hotel in **Reykjavik** if they can store your excess luggage while you're on the Ring Road tour.

Luggage Lockers: For a small daily fee, you can use luggage lockers, which are a popular option. These lockers are available at various locations throughout **Reykjavik** and **near Keflavik Airport**.

Pricing varies depending on the duration of storage, the size of your suitcase, and the locker location. Please refer to the updated price list for more details.

About BusTravel Iceland's Multi-day Tour Vehicle

Around Iceland Multi-day tours are BusTravel Iceland's new offers since the beginning of 2024. With our **young fleet of Mercedes-Benz 19-seater Sprinters**, all well-maintained and under 5 years old, we aim to provide an exceptional experience for our passengers, offering ample space, functionality, and comfort.



The type of vehicle is a standout choice for multi-day tour transportation needs. This versatile and efficient mini bus is perfect for long-distance tours, offering **spacious accommodation** designed to make every journey enjoyable.

For your convenience on the road, the vehicle is equipped with an **item holder, overhead rack, USB charging port**, and more. Additionally, the tour guide will use a microphone connected to the vehicle's stereo system, ensuring that you can hear every interesting detail loud and clear.

In our minibus **configuration**, seats are typically arranged in **one or two forward-facing rows**, flanked by a **central aisle**, with the **last row consisting of four seats**. All luggage is securely stored in the **rear trunk** (or trailer), while personal items can be conveniently placed in the overhead rack.

The meticulously maintained minibus stands as the epitome of refined travel, ensuring a seamless journey across the breathtaking landscapes of Iceland.

Weather in Iceland

Iceland's **weather** is as varied as its dramatic landscapes, characterized by **swift changes** that can occur multiple times within a single day. We should prepare for all types of weather regardless of the season.



You can expect rapid changes, with sunny skies suddenly giving way to rain or even snow. Weather in Iceland is famously unpredictable, often showcasing “**four seasons in a day.**”

The island's weather is influenced by the **Gulf Stream**, which brings milder temperatures and moist ocean air. As a result, the climate is generally cool and temperate. Wind is a constant feature, especially in open areas like beaches and highlands, making it **feel colder** than actual temperatures suggest.

Precipitation is frequent and can occur at any time of year, with coastal areas receiving more rain than the interior. This moisture contributes to the lush green landscapes that characterize much of the country during warmer months. **Fog** is also common, especially in coastal regions, adding a mystical element to the landscape but occasionally hindering visibility for drivers and hikers.

Seasons in Iceland

The **seasons** in Iceland each bring their unique characteristics and opportunities for tourists, making any time of year interesting to visit.



Spring (March to May) marks a transition with gradually increasing daylight and temperatures, moving from about 0°C (32°F) in early March to around 10°C (50°F) by late May. Snow begins to melt, revealing vibrant green landscapes. This is an excellent time for bird watching as migratory species return, and for visiting attractions before the peak tourist season.

Summer (June to August) offers the warmest weather, with temperatures typically between 10 and 15°C (50 to 59°F). Nearly 24-hour daylight in June allows for extensive outdoor activities such as hiking, cycling, and exploring the highlands. Summer is ideal for touring the entire Ring Road and accessing more remote areas.

Autumn (September to November) sees decreasing temperatures and daylight, with conditions similar to spring but with the added beauty of fall colors. This season is quieter in terms of tourism but offers dramatic landscapes and good opportunities for spotting the Northern Lights as the nights grow longer.

Winter (December to February) is characterized by cold temperatures, ranging between -5 to 5°C (23 to 41°F), and minimal daylight—about 4 to 5 hours around the winter solstice in December. This season is perfect for experiencing the Northern Lights, ice caving, and snowy landscapes. However, travelers should be prepared for potentially challenging driving conditions and some inaccessible rural areas.

Each season in Iceland offers unique experiences and landscapes, from winter's auroras to summer's midnight sun, making it a year-round destination for adventurers and nature lovers.

Daylight Change in Iceland

Daylight hours in Iceland vary dramatically between seasons. Near the Arctic Circle, Iceland experiences extreme shifts in daylight, which can range from almost 24 hours during summer to just a few hours in winter.

Summer: The phenomenon known as the **Midnight Sun** occurs around the summer solstice (June 21), when the sun barely sets in parts of Iceland, particularly in the north. In Reykjavik, daylight extends for about 21 hours around this time. This extended daylight allows for long days of sightseeing, hiking, and other outdoor activities, making it a popular time for tourists.

Autumn: Daylight begins to decrease rapidly after the summer solstice. By the equinox in September, daylight hours drop to about 12 hours and continue to decrease until the winter solstice.

Winter: The shortest day falls around December 21, with Reykjavik experiencing only about 4 hours of daylight. This minimal daylight limits outdoor activities but opens up unique experiences like viewing the Northern Lights.

Spring: Daylight starts to increase again after the winter solstice, reaching equal daylight and night hours by the spring equinox in March. The growing daylight supports a resurgence in outdoor tourism and the revival of Iceland's natural beauty.

Want to read more about Iceland's daylight change? Here is [our comprehensive guide](#).

Date	Sunrise	Sunset	Daylight
January 15th	10:54	16:20	05:25
February 15th	09:23	18:01	08:38
March 15th	07:46	19:28	11:42
April 15th	05:56	21:01	15:05
May 15th	04:13	22:37	18:24
June 15th	02:57	23:59	21:02
July 15th	03:41	23:24	19:43
August 15th	05:18	21:43	16:25
September 15th	06:50	19:53	13:03
October 15th	08:17	18:07	09:50
November 15th	09:56	16:27	06:31
December 15th	11:16	15:29	04:13

How To Dress When You Travel Around Iceland

When traveling around Iceland, **dressing in layers** is essential due to the country's unpredictable weather.

Start with a moisture-wicking **base layer** to keep dry, add an insulating **mid layer** such as fleece or wool for warmth, and finish with a waterproof and windproof **outer layer** to protect against the frequent rain and wind.

For activities like hiking, quality thermal socks and specialized gear may be required, and always pack a **swimsuit** for visits to Iceland's many geothermal pools. This approach allows for flexibility, adapting easily to sudden changes in weather, ensuring comfort and protection as you explore Iceland's natural beauty.

Choosing the **right shoes** is crucial for a trip to Iceland, given its varied terrain and weather conditions. For most activities, sturdy waterproof hiking boots are ideal. These should offer good ankle support to navigate rocky or uneven paths, and a firm grip to handle slippery surfaces like wet rocks and ice. If you plan on exploring glaciers or engaging in more intense hikes, specialized hiking boots designed for these conditions are recommended.

Sturdy waterproof **footwear** is a must for navigating Iceland's rugged terrain and occasional wet conditions. A pair of crampons is very helpful during winter in Iceland. Don't forget accessories like a warm hat, gloves, and a scarf, especially outside the summer months.

For more casual sightseeing or urban exploration, such as walking around Reykjavik or other towns, comfortable waterproof walking shoes or even well-insulated winter boots in colder months will suffice. It's also wise to bring along a pair of water-resistant sandals or older sneakers if you intend to visit geothermal areas or beaches, where you might encounter mud or water.

In essence, the right footwear will not only keep your feet dry and warm but also help prevent slips and falls on Iceland's unpredictable terrains, making your experience safer and more enjoyable.



Base layer



Mid layer



Outer layer

How to Pack for Your 7-Day Adventure Around Iceland

Here is a quick picking list:

Clothing

- ☐ **Base Layers:** Thermal underwear - top and bottom, suitable for cold weather.
- ☐ **Insulating Layers:** Fleece or wool sweaters and trousers for added warmth.
- ☐ **Outer Layers:** Waterproof and windproof jacket and trousers.
- ☐ **Accessories:** Warm hats, gloves, and scarves. Consider also packing earmuffs and a neck gaiter.
- ☐ **Footwear:** Waterproof hiking boots with good grip and ankle support. Additional casual, waterproof shoes or boots for lighter activities or urban exploring.
- ☐ **Extras:** Warm socks, ideally wool or a wool blend. Pack several pairs for layering and dry replacements.

Gear and Accessories

- ☐ **Backpack:** A durable daypack to carry essentials during outings.
- ☐ **Water Bottle:** Reusable, to take advantage of Iceland's clean tap water.
- ☐ **Sunglasses and Sunscreen:** Necessary year-round due to UV exposure from sunlight reflecting off surfaces like snow and water.
- ☐ **Swimwear:** For hot springs and public geothermal pools, with a quick-dry towel.

Tech and Navigation

- ☐ **Power Bank and Chargers:** Ensure compatibility with European standard (Type C and F) outlets.
- ☐ **Travel Adapters:** For electronic devices not using the European plug standard.
- ☐ **Maps and Guidebooks:** Consider digital and physical copies for areas with limited cell service.

Personal Items

- ☐ **Toiletries:** Include lip balm and moisturizer to combat dry conditions.
- ☐ **First Aid Kit:** Basic supplies, along with any personal medications.
- ☐ **Snacks:** Energy bars and other portable food items can be helpful during long excursions.

Optional Items

- ☐ **Camera:** With extra batteries or charger.
- ☐ **Binoculars:** For wildlife and scenic viewing, especially during the less crowded seasons.
- ☐ **Journal:** To document your travels and experiences in Iceland.

Season-Specific Items

- ☐ **Winter:** Additional thermal layers, ice grips (crampons) for shoes (they can also be purchased in Iceland, for example, in Vik i Myrdal,) and heavier outerwear.
- ☐ **Summer:** Lighter clothing options, a breathable rain jacket, and bug spray if venturing into the highlands.

By packing these essentials, you'll be well-prepared for a variety of activities and weather conditions, ensuring a comfortable and enjoyable Icelandic adventure. Please read our guide to [packing for your trip to Iceland](#).

Good to Know

Iceland's Bathing Etiquette

In Iceland, **bathing etiquette** is taken seriously, especially when visiting **geothermal pools** and **public baths**. Before entering communal swimming or hot spring areas, it is **mandatory** to **shower thoroughly without swimwear**. This practice ensures cleanliness and hygiene given the communal nature of the bathing facilities. Signs and instructions in multiple languages are typically posted to guide visitors through the process. Additionally, most facilities provide private shower stalls for those who prefer privacy. Following these simple yet essential rules helps maintain the quality and enjoyment of Iceland's beloved geothermal bathing culture for everyone.

Icelandic Quick Tips

Mastering a few **basic phrases** in **Icelandic** can enhance your experience while traveling in Iceland. Although most Icelanders speak fluent English, especially in tourist areas, knowing some local language shows respect and can be appreciated by the locals. Here are some handy **Icelandic phrases** along with their English translations to help you with daily interactions:

Salutations

Hello: "Halló" (ha-lo)

Good morning: "Góðan daginn" (GO-than dai-yin)

Good night: "Góða nótt" (GO-tha noht)

Goodbye: "Bless" (bles)

Courtesy

Please: "Vinsamlegast" (VIN-sam-leg-ast)

Thank you: "Takk" (tahk)

Yes: "Já" (yow)

No: "Nei" (nay)

Excuse me / Sorry: "Afsakið" (AHP-sa-kith)

Essentials

How much does this cost? "Hvað kostar þetta?" (kvaht KOS-tar thet-ta)

Where is the bathroom? "Hvar er salernið?" (kvar er sah-LYER-nith)

I need help: "Ég þarf aðstoð" (yeg tharf a-ystoth)

I don't understand: "Ég skil ekki" (yeg skeel EH-kee)

Ordering Food

I would like... "Ég myndi vilja..." (yeg MIN-dee VIL-ya)

The bill, please: "Má ég fá reikninginn?" (mow yeg fow RAYK-ning-in)

Water: "Vatn" (vahtn)

Beer: "Bjór" (byohr)

Emergency

Help! "Hjálp!" (HYAULP)

Fire! "Eldur!" (EL-dur)

Call the police: "Hringdu í lögreglu" (HRING-doo ee LUR-eg-lu)

Remember, while the pronunciation can be tricky, your efforts are likely to be warmly received. Most Icelanders appreciate when visitors try to use their language, even if it's just a word or two.

Iceland Basic Facts

Iceland is a **Nordic island country** situated in the **North Atlantic Ocean**, on the **Mid-Atlantic Ridge**. It is known for its dramatic volcanic landscape of geysers, hot springs, waterfalls, glaciers, and black-sand beaches. The country covers an area of approximately **103,000** square kilometers (**40,000** sq mi), making it the most sparsely populated country in **Europe** with a population of about 364,000 people. The majority of the population resides in the capital, **Reykjavik**, which is located in the southwestern part of the island and is powered almost entirely by geothermal energy.

Iceland was settled in the **9th century** by Norsemen from Scandinavia and Celts from the British Isles. It was an independent commonwealth until the 13th century when it came under Norwegian rule. Iceland then moved under the crown of Denmark in the 14th century, achieving full **independence** only in **1944**, becoming a republic on **June 17th** of that year.

Icelandic culture is founded upon the nation's Scandinavian heritage. Most Icelanders are descendants of Norse and Gaelic settlers. **Icelandic**, a **North Germanic language**, is descended from **Old Norse** and is closely related to Faroese and West Norwegian dialects. The country's cultural heritage includes **traditional Icelandic cuisine**, poetry, and the **medieval Iceland Sagas**. These sagas are among the key historical sources for the period of the Vikings and early Norse and Celtic settlers.

Iceland has a mixed economy with high levels of free trade and government intervention. However, it does rely heavily on **fishing**, which makes a significant contribution to its GDP and employs a large percentage of the workforce. In recent years, the economy has diversified into **manufacturing** and **service industries**, with **tourism** growing remarkably. The financial sector also experienced rapid expansion before the global financial crisis of 2008 when the major Icelandic banks defaulted.

Iceland's government is a **unitary parliamentary republic**. The head of state is the **President**, elected by a popular vote for a **four-year term**, with no term limits. The President's role is mostly ceremonial, with the executive power resting with the government. The **Althingi** (the national parliament of Iceland), one of the **oldest parliamentary institutions in the world**, exercises legislative power.

Geologically, Iceland is part of the Mid-Atlantic Ridge, where the **North American** and **Eurasian tectonic plates** meet. This location makes it highly geologically active, with many volcanoes, notably Hekla, Eldgja, Herdubreid, and Eldfell. The volcanic eruptions and geothermal energy are significant, not only to the island's power needs but also to its geography and bathymetry. This geothermal energy is harnessed to provide for the energy needs of the populace, making Iceland one of the most **environmentally friendly** countries in terms of energy consumption.

In terms of natural beauty, few places on earth can match the **diversity** and **drama** of Icelandic landscapes. This natural beauty is protected in three national parks, several nature reserves, and the country is considered a leader in using **renewable energy** sources. It is also known for its commitment to **gender equality**, having been ranked as the most gender-equal country in the world by the World Economic Forum.

BusTravel Iceland's Reviews and Passenger Feedback

As one of the longest-running tour operators in Iceland, **BusTravel Iceland** reimaged its mission in 2021, wanting to lead with adventurous spirits and exceptional guides.

BusTravel Iceland has earned the **Travelers' Choice badge** from TripAdvisor for three consecutive years, from 2022 to 2024, in recognition of over 45,000 five-star reviews across various platforms, highlighting our commitment to quality guides and customer service. Additionally, we are honored to be named the **Innovative Tour Company of the Year** in Iceland by the Travel & Hospitality Awards.

Explore the [reviews](#) below to see what others have shared about their experiences:

★★★★★ 5/5

by **Belinda**

October 15, 2024

Our tour started on 1 October with a prompt pickup by our guide Andy.

We spent the week getting to know him and our happy group of travellers. Andy was really informative and professional and ensured we arrived safely at each location with enough time to experience the magnificence of Iceland! There was a lot to fit in each day but Andy went above and beyond to make the week as interesting and enjoyable for all of us. He's a genuinely nice guy. Thanks Andy!

I would highly recommend this BusTravel tour for a wonderful introduction to Iceland.

★★★★★ 5/5

by **Laura**

June 25, 2024

It was an amazing experience travelling around Iceland with our guide Sindri.

His love for the Icelandic nature made the trip so very special, he shared with us his extensive knowledge about all things Icelandic. He made us always feel safe and comfortable in exploring the different sites and was just great fun to be with. The accommodation provided was always excellent, everything went so smoothly that it was very sad when the trip came to an end.

Highly recommend the tour, if you're as lucky as we were to have Sindri as your guide it'll be the best trip!

★★★★★ 5/5

by **Lourene**

15th April 2024

Great tour and excellent tour guide in Emily. She was knowledgeable, kind and attentive to group needs.

Our group was small, making for very comfortable travelling. The scenery was amazing and the tour met our expectations! Breakfasts and stays excellent!

Thanks for efficiency and excellent communication from booking to finish. Highly recommend!

Now, it's your turn to embark on a Ring Road adventure with us and experience Iceland firsthand.